



Artline
GROUP

Artline GROUP



Established in 1978, we are known for our vast years of experience and providing unique solutions to the most complex requirements.



Our production facilities geographically located throughout the country, can save on both lead time and cost.



We are your turn-key provider of art and mirrors. From Design to production to installation, we cover all aspects of fulfillment.



We are recognized as a leader in the industry, our firm is well known in healthcare, corporate, government and hospitality.



Our philosophy of treating each project individually enables our art department to create art suited to your project.



We specialize in printing on various materials, including acrylic, canvas, aluminum, vinyl, and much more.

Your Imagination, Our Creation.

Projects Recently Completed by Artline

Hotel Branch	Location
AFFINIA GARDENS HOTEL	NEW YORK, NY
AFFINIA HOTEL	CHICAGO, IL
AZTAR	EVANSVILLE, IN
BOARDWALK RESORT	VIRGINIA BEACH, VA
BULFINCH HOTEL-BOSTON	BOSTON, MA
BURR OAK LODGE	GLOUSTER, OH
BW-CITY CENTER HOTEL	OSHKOSH, WI
CAPITOL HILL SUITES	WASHINGTON, DC
CLUB QUARTERS - WACKER	CHICAGO, IL
COMFORT INN & SUITES	WALDORF, MD
COMFORT INN & SUITES	DEMOPOLIS, AL
COMFORT INN & SUITES	STONE MOUNTAIN, GA
COPPERLEAF HOTEL	APPLETOWN, WI
COTTONWOOD INN	GLASGOW, MT
COUNTRY INN & SUITES	TEMPE, AZ
COUNTRY INN & SUITES	PHOENIX, AZ
COURTYARD BY MARRIOTT	FORT LAUDERDALE, FL
COURTYARD BY MARRIOTT, JFK	JAMAICA, NY
COURTYARD ITHACA	ITHACA, NY
COURTYARD-MIAMI BEACH	MIAMI BEACH, FL
CROWNE PLAZA	NEW YORK, NY
DOUBLE TREE	CEDAR RAPIDS, IA
DOUBLE TREE BUCKHEAD	ATLANTA, GA
DOUBLETREE	ROCHESTER, NY
DOUBLETREE HOTEL	SANTA BARBARA, CA
FAIRFIELD INN	LAUREL, MD
FAIRFIELD INN	BETHLEHEM, PA
FAIRFIELD INN	LAUREL, MD
FAIRFIELD INN	ALBANY, NY
FLAGSHIP RESORT	ATLANTIC CITY, NJ
GRANDSTAY HOTEL	LUVERNE, MN
HAMPTON INN	LEESVILLE, LA
HAMPTON INN & SUITES	ADDISON, IL
HAMPTON INN HERALD SQUARE	NEW YORK, NY

Hotel Branch	Location
HARD ROCK HOTEL AND CASINO	BROKEN ARROW, OK
HILTON HOTEL	RALEIGH/DURHAM, NC
HOLIDAY INN	FORT LEE, NJ
HOLIDAY INN EXPRESS	BENSALEM, PA
HOLIDAY INN EXPRESS	NEW YORK, NY
HOLIDAY INN SELECT	ORLANDO, FL
HOLLYWOOD HOTEL	HOLLYWOOD, CA
HOMEWOOD SUITES	SOUTHINGTON, CT
HOMEWOOD SUITES SEAWORLD TX	SAN ANTONIO, TX
HOTEL INDIGO	SAN ANTONIO, TX
HOTEL MIRAMAR/INTERCONTINENTAL PANAMA	PANAMA CITY
HOTEL VINTAGE PARK	SEATTLE, WA
IMPERIAL PALACE	LAS VEGAS, NV
INTERCONTINENTAL HOTEL	KANSAS CITY, MO
INTERNATIONAL TOWN & COUNTRY CLUB	FAIRFAX, VA
ISAAC JACKSON HOTEL	ELKINS, WV
JEWEL HOTEL	NEW YORK, NY
KNOTT'S BERRY FARM	BUENA PARK, CA
LAKEVIEW RESORT	MORGANTOWN, WV
LAS VEGAS HOTEL & CASINO	LAS VEGAS, NV
LYDEN GARDENS HOTEL	NEW YORK, NY
MAINGATE LAKESIDE RESORT	KISSIMMEE, FL
MARRIOTT	CENTRAL ISLIP, NY
MARRIOTT RESIDENCE INN	CAMBRIDGE, MA
MOHEGAN SUN CASINO	WILKES BARRE, PA
NU HOTEL	BROOKLYN, NY
OCEAN FIVE HOTEL	MIAMI BEACH, FL
PARK INN WEST	MECHANICSBURG, PA
PLAZA 50 HOTEL	NEW YORK, NY
PROVIDENCE HILTON HOTEL	PROVIDENCE, RI
RADISSON	TREVOSE, PA
RADISSON HOTEL	ROCHESTER, NY
RADISSON HOTEL	NEW YORK, NY
RADISSON MARTINIQUE ON BROADWAY	NEW YORK, NY

Hotel Branch	Location
RADISSON WHITTIER HOTEL	WHITTIER, CA
RESIDENCE INN	LOUISVILLE, KY
RESIDENCE INN	LANGHORNE, PA
RESIDENCE INN	GREENBELT, MD
RESIDENCE INN	ALTAMONTE SPRINGS, FL
RESIDENCE INN	INDIANAPOLIS, IN
RESIDENCE INN	LEXINGTON, KY
RESIDENCE INN ATLANTA PEACHTREE	NORCROSS, GA
RIMROCK RESORT HOTEL	BANFF, ALBERTA, CANADA
ROOSEVELT INN & SUITES	WATFORD CITY, ND
SHERATON	KANSAS CITY, MO
SHERATON COMMANDER HOTEL	CAMBRIDGE, MA
SHERATON NASHVILLE	NASHVILLE, TN
SQUAW VALLEY LODGE	OLYMPIC VALLEY, CA
THE H HOTEL	NEW YORK, NY
TOWNEPLACE SUITES	COLUMBIA, SC
TYSON COMER	WASHINGTON, DC
VANDERBILT YMCA	NEW YORK, NY
WESTIN HOTEL	DALLAS, TX
WINNERS CIRCLE RESORT	SOLANA BEACH, CA
WYNDHAM GARDEN EXTON-PA	EXTON, PA
WYNDHAM ORANGE COUNTY	COSTA MESA, CA

Project Portfolio

Double Tree Cedar Rapids Convention Center: Cedar Rapids, IA



Project Portfolio

Hard Rock Hotel: Tulsa, OK



Mirror Capabilities

Mirrors

Artline can provide Mirror Solutions to the size and style of your design.



Embassy Suites, Fayetteville, NC



Courtyard by Marriott Wilmington, NC
Etched Mirror



Sheraton, Nashville, TN

Product Showcase

Mirror Ideas



Custom Saddle Stitched leather mirrors



Frosted Mirror

Mirror Capabilities

Mirror Textures/Looks



Item: MT-YA3
Style: Pebbles

Also Available in :
Antique Silver
Copper
Bright Silver



Item: MT-CAI
Style: Rain Glass

Also Available in :
Antique Silver
Copper
Bright Silver



Item: MT-CMI
Style: Reeds

Also Available in :
Antique Silver
Copper
Bright Silver



Item: MT-SDM5
Style: Satin

Also Available in :
Satin Deco
Satin Deco Sparkle
Antique Silver Velour

Mirror Capabilities

Antique Mirrors

Antique 1



Antique 3



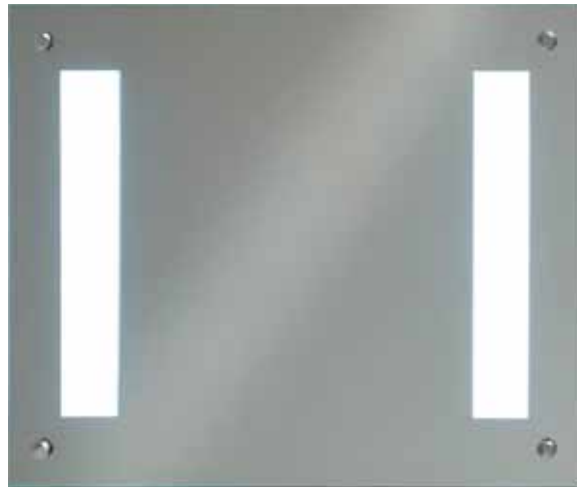
Antique 5



Antique 10



Additional Ideas



Sandblasting



Custom V-Groove

Lighted Mirrors

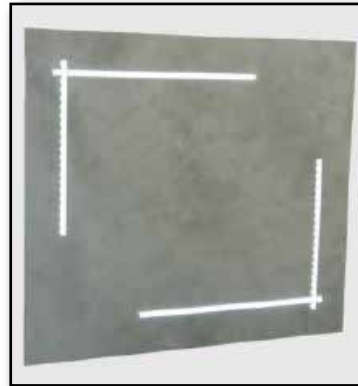
Mirror Examples



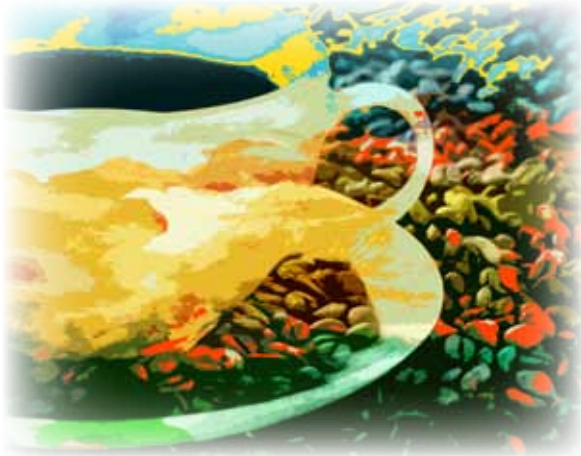
Lighted Mirror Capabilities

Mirror Types

- 50k Hour LED
- CCT (K) 6500
- CRI 100
- IP20 Independent LED Driver
- UL Certified
- 120/240 VAC Input
- IP44 Class II Rated
- Stainless Steel Construction
- 5mm Silvered Glass
- Integrated Diffusers
- On / Off Rocker Switch
- 5 Year Warranty
- Replacement Parts Available



Your Imagination, Our Creation.



Custom Art

All we need is color scheme and theme and our team will create the art suited for your project

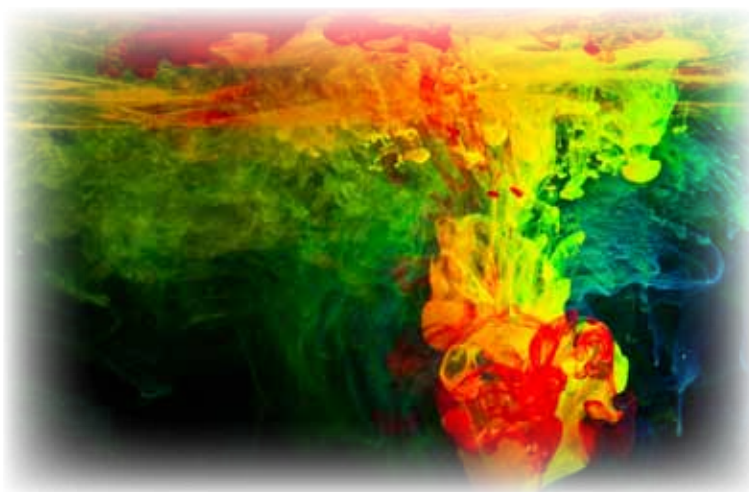
Regional Art

From local landmarks to aerial photography, our team can provide regional art from any part of the world



Custom Photography

Our creative team of photographers provide a full range of services from creation to color correction



Colorization



Sepia



Color Pop



Black and White

Collages



Multiple images combined to make 1 image

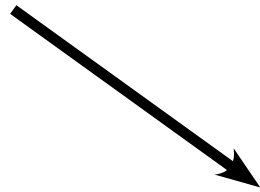


Single image split into Multiple images

Water Color Technique



Original Image



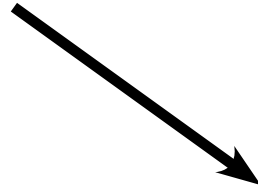
Detail of Watercolor Technique



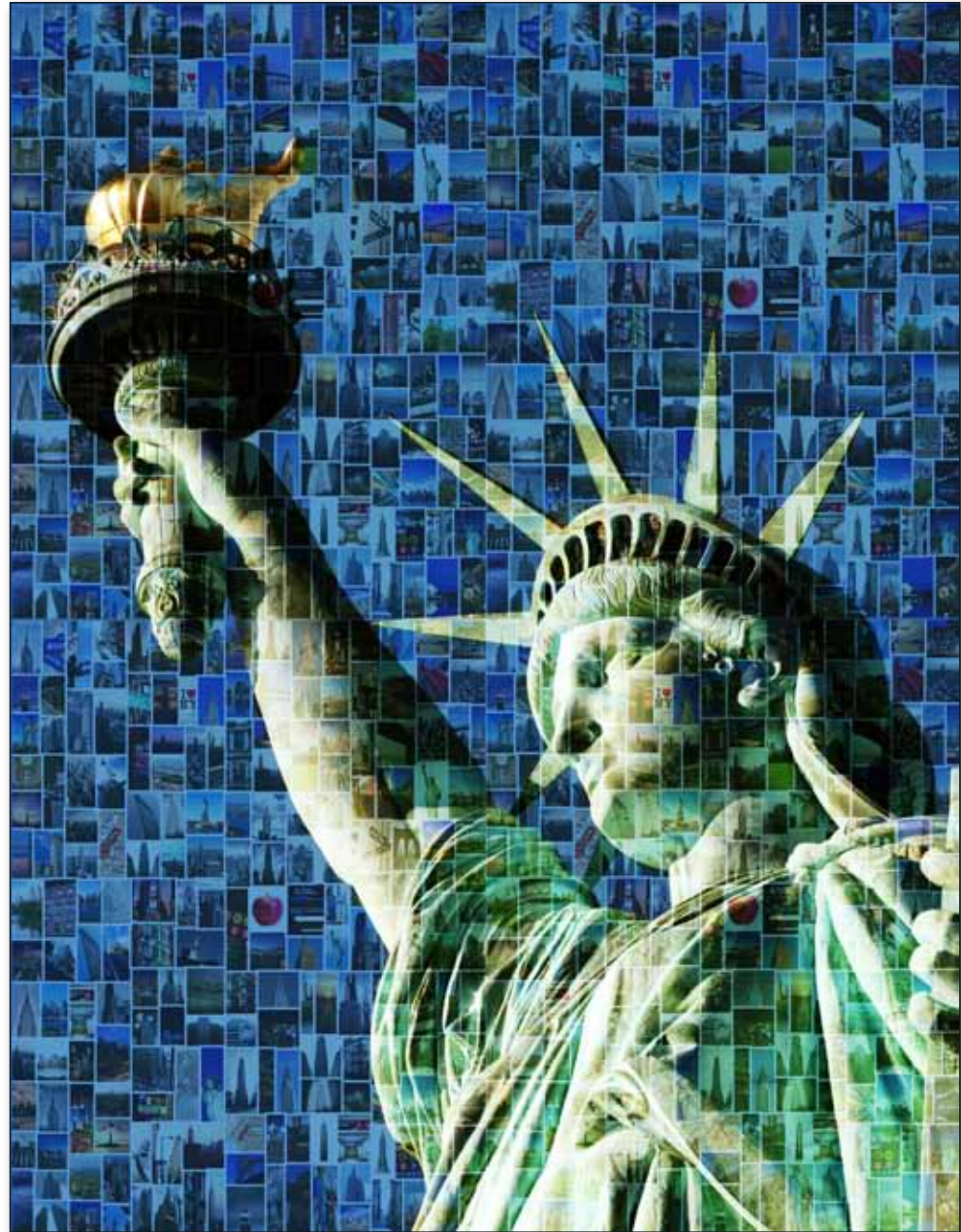
Mosaic Technique



Original Image



Detail of Moasic Technique



Cropping Technique



Image Transformations



Printing Capabilities

Acrylic Application



Acrylic (Transparent)*



Acrylic (Opaque)*
Image collage created for H Hotel, New York, NY



Best Western Reception Desk



Wyndham Costa Mesa, CA

* Largest printing on Acrylic: 48" x 96" on one panel

Printing Capabilities

Acrylic Ideas



Acrylic on Headboard:
Top: Transparent Panel
Right : Opaque Panel

Bottom: Opaque Panel from
Self Help, New York, NYC



Printing Capabilities

Aluminum Application



DoubleTree Cedar Rapids, IA - Triptych
Middle piece: 72 in width X 48 in height

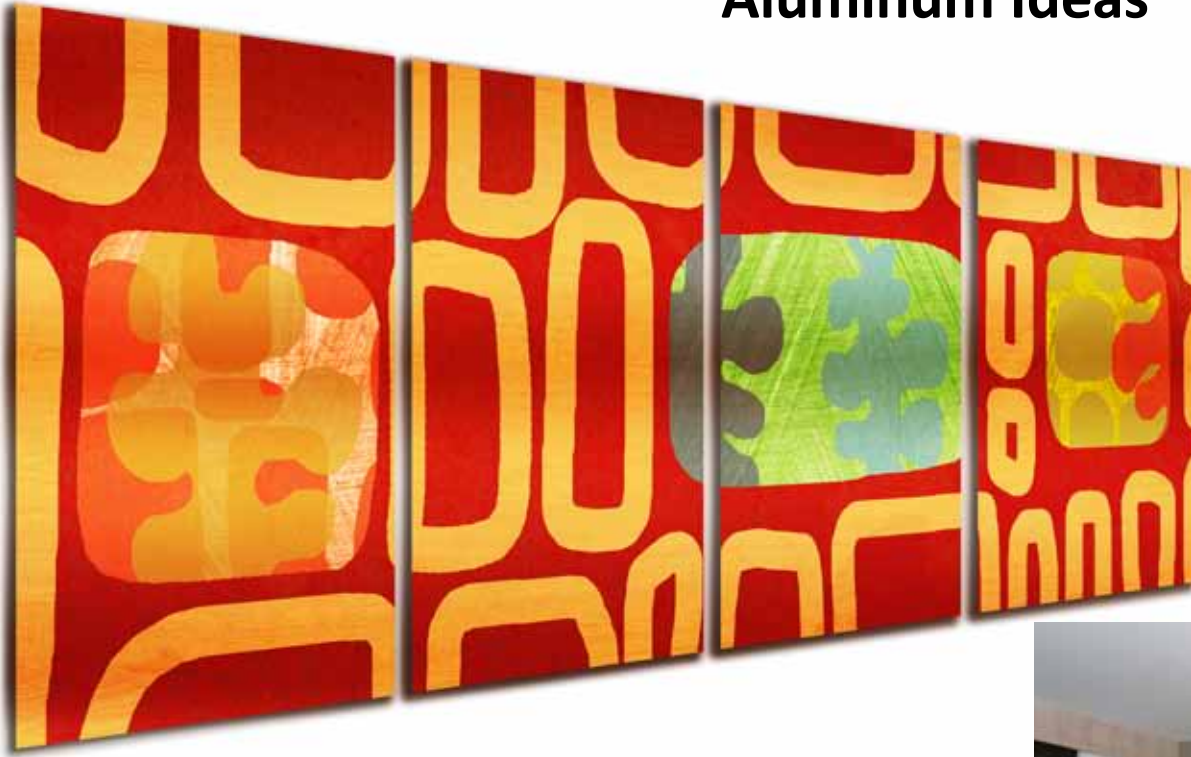


Samples on Aluminum*

* Largest printing on Aluminum: 48" x 96" on one panel

Printing Capabilities

Aluminum Ideas



Top: Panels Split

Right : Panel in Hotel Room



Printing Capabilities

Aluminum Scratch Resistant - Elevator Panels



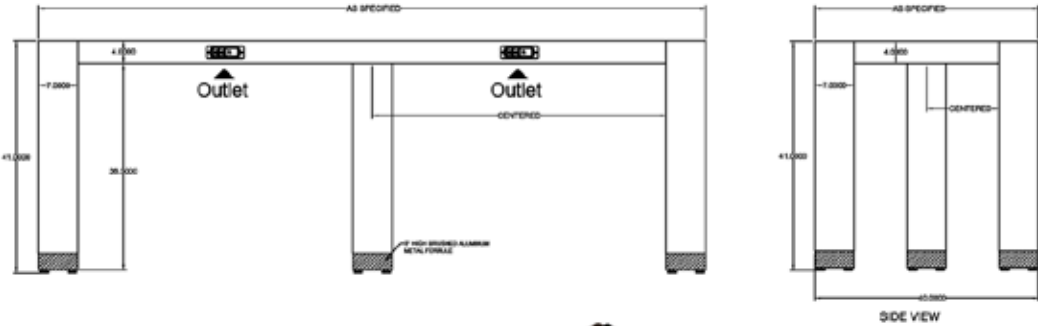
Artline Scratch Resistant Metal prints are lightweight, durable, made with recycled material and 100% recyclable. Because images are infused directly into specially coated aluminum, Artline Scratch Resistant Metal offer unsurpassed color vibrancy, exceptional detail and color resolution and will not fade in indirect sunlight.

- Meets Class B flame spread index 75 or less and smoke developed index 450 or less
- Corners available in 1/8" radius or square cut
- Hoffman Scratch Tester result of 1800
- Fade and Stain resistant
- Chemical and ammonia resistant
- Moisture resistant



Printing Capabilities

Aluminum Scratch Resistant - Community Tables



AVAILABLE STANDARD SIZES				
NOMENCLATURE	WIDTH	DEPTH	HEIGHT	#LEGS
PSCT 118 40 41 AP	118	40	41	5
PSCT 118 34 41 AP	118	34	41	5
PSCT 94 40 41 AP	94	40	41	5
PSCT 94 34 41 AP	94	34	41	5
PSCT 70 34 41 AP	70	34	41	4
PSCT 58 34 41 AP	58	34	41	4
WOOD SPECIES: BIRCH SOLIDS & VENEERS				
WOOD FINISH: ARTLINE STANDARD				

Custom Size and Finishes Available Upon Request

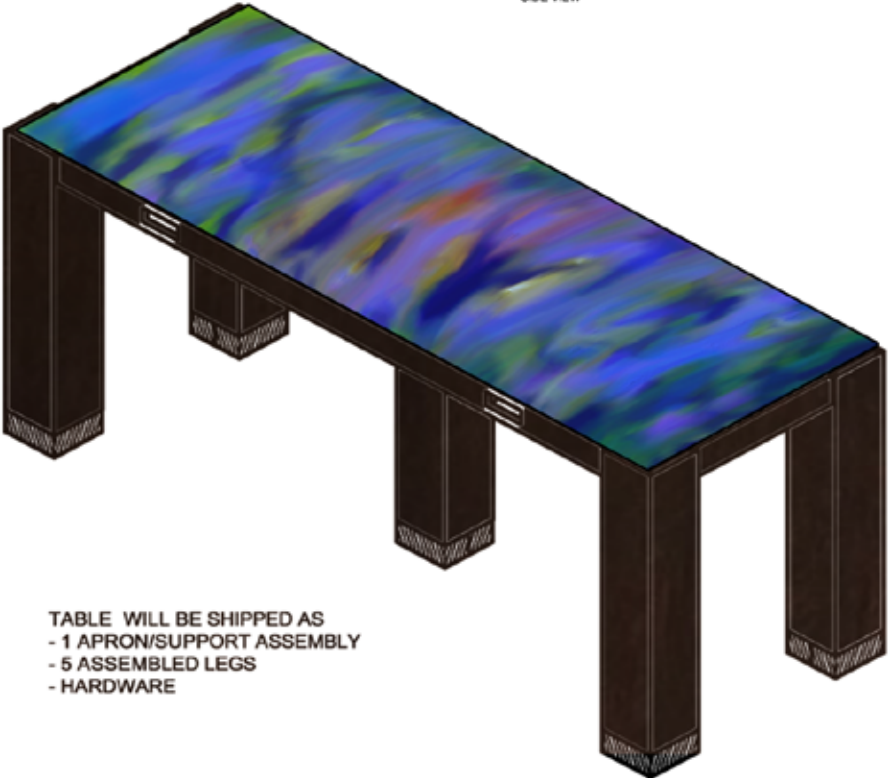


TABLE WILL BE SHIPPED AS
 - 1 APRON/SUPPORT ASSEMBLY
 - 5 ASSEMBLED LEGS
 - HARDWARE

Printing Capabilities

Canvas Application



Concept image
Created by Artline



Concept Image for Mohegan Sun
Created by Artline



Mohegan Sun, Pocono Downs, PA
Canvas Art - 96 inches wide X 30 high, with Hard Backing to prevent puncturing

* Largest printing on Canvas 96" Wide

Printing Capabilities

Canvas Ideas



Gallery Wrapped Canvas Art Above Headboard



Mohegan Sun, Pocono Downs, PA

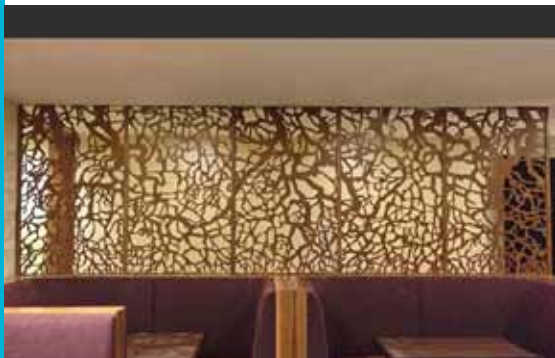
Laser Cut Art

An artwork cut into a custom sized flat piece of either Acrylic, Aluminum, or Wood.
Custom panels can be used many different ways:

Built-in for room divider partitions or privacy screens

Design element directly mounted to walls, ceilings or archways, Return air registers, and Window coverings.

We can scale or modify these artworks, or create a new artwork from your provided sketch or photo.



Laser Cut Art Capabilities

Specifications:

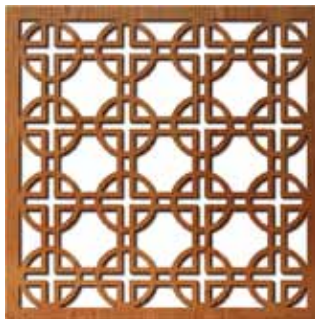


Wood Substrate:
Available Thickness: 1/4" or 1/2" (depending on Size)
Single or Double Sided Options Available
Fire Rating Available Upon Request

Acrylic Substrate:
Available in: 1/4" and 1/2" (1/4" is standard)

Aluminum Substrate:
Available in: 1/8" and 1/4" (1/8" is standard)

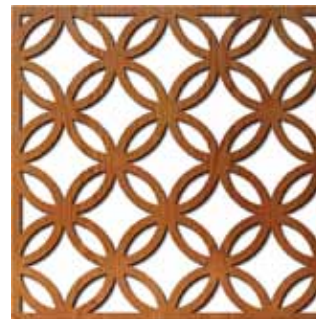
Standard 1 1/2" Border All Around for mounting
Fire Rating Available Upon Request



Circle



Hexagon Puzzle



Japanese Circles



Bamboo



Waterfalls



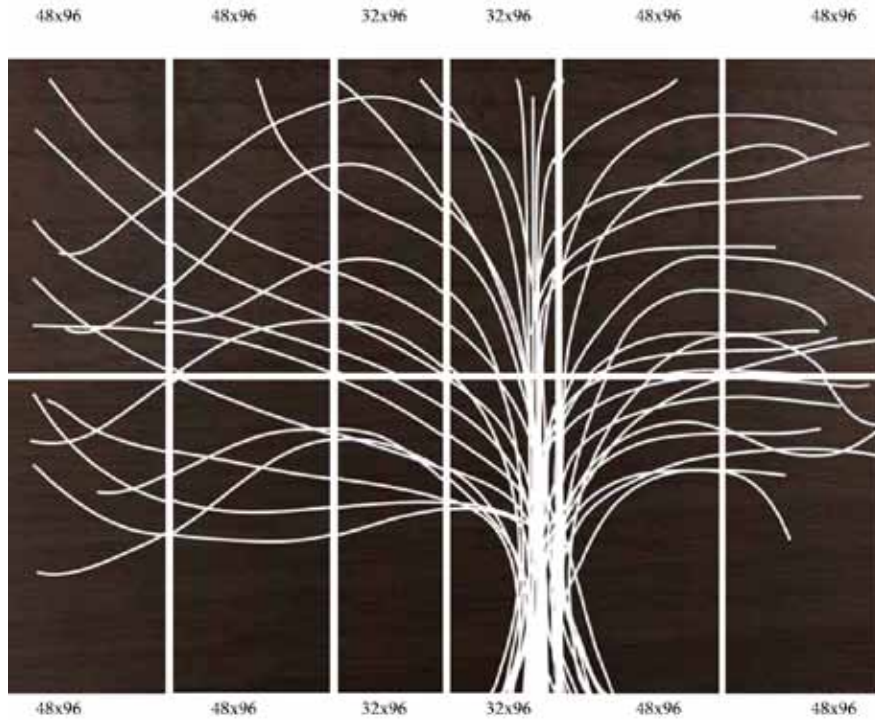
Persian Circles



Spirals

Light Panels

The Artline Light Frame System is an ultra-slim sheet of light that combines LED lighting technology and an exclusive 3D cutting process to give you a versatile light source that generates a soft & even beam of light virtually without any heat. It's slim profile and low power draw make the Artline Light Frame System applicable in many different applications; especially retail & display lighting, accent and signage lighting.



Conceptual Drawing

Maximum Size: (A) 157" x 63" -or- (B) 118" x 78" x 1/4"
Voltage: 12VDC Wattage: 6W/Linear Foot (Single Side LED)

Dimmer Option Available Upon Request

Embassy Suites, Saratoga Springs, NY



Printing Capabilities

Wood Art



Original Image



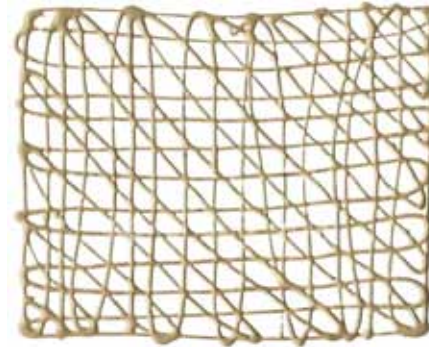
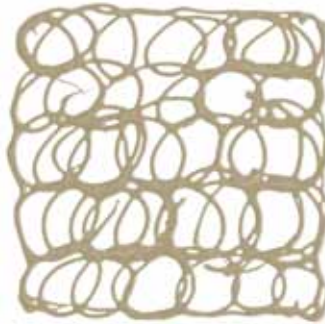
Image Printed on Wood

Pattern Art

Pattern Art is a flexible media that can be displayed floating between glass or mounted to matboard. It is self-adhering and bonds with glass instantly, or mount it to matboard with a few seconds of heat. Each piece is hand made and hand painted. Three patterns to choose from; any shape, any size, any color.

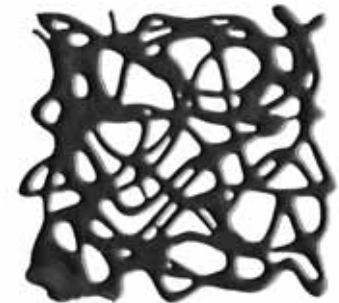
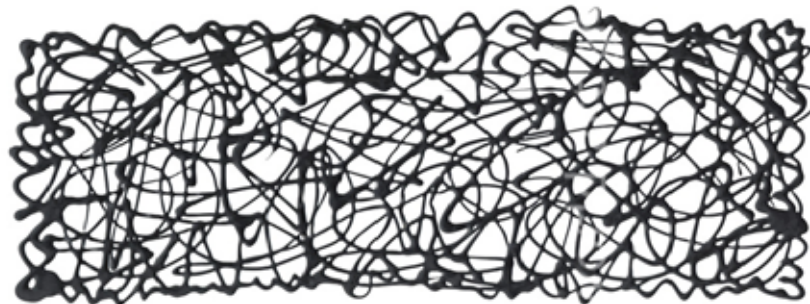
Pick your pattern.

Squiggle, Spiral or Grid, as shown below, respectively.



Pick your shape and size.

Circle, rectangle or square. Provide us with dimensions up to 36", and we'll build the Pattern Art according to your specifications.



Pattern Art

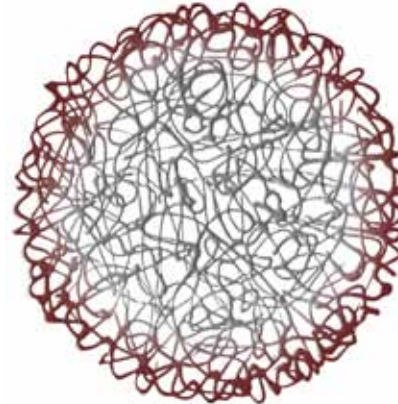
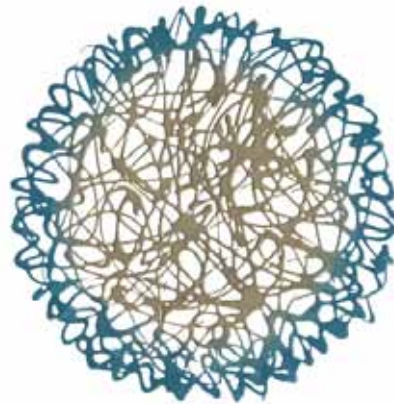
Samples of Patterns

Pick your color.

We currently have four metallics and six colors. Two-tone ombre applications or all-over color are available. Provide a Pantone swatch for custom colors.

Metallics: Antique Gold, Champagne, Gun Metal, Bronze

Colors: Black, White, Teal, Green, Deep Red and Deep Purple.



Pattern Art Sandwiched between Two Glass Pieces



Printing Capabilities

Vinyl Application



Samples on Vinyl*



Image created for Hard Rock Hotel, Philadelphia, PA



Vinyl Concept I: Image installed on Wall *



Vinyl Concept II: Image installed on Headboard *

* Largest printing on Vinyl as wide as 52" per panel

* Vinyl Spec Sheet available towards back of booklet.

Printing Capabilities

Vinyl Application

Cambria Suites, Fargo ND



Comfort Inn, Columbia, SC

Printing Capabilities

Framed Art



Hard Rock Hotel, Tulsa OK
Image directly printed on hardboard
and framed in rustic frame



Doubletree Rochester, NY
Regional Photography and Framing

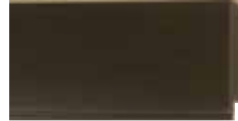


Bulfinch Hotel, Boston MA
Framed with Custom Steel
Welded Frame and Rustic
Frame in Middle

Popular Frame Options



Black w/ Lip
1007740 - Cat. B
1-3/4" in



Espresso w/ Black Lip
1064740 - Cat. B
1-3/4" in



Stainless Steel w/ Lip
1010740 - Cat. B
1-3/4" in



Stainless w/ Black
1041134 - Cat. C
2" in



Stainless Steel
1011174 - Cat. B
2" in



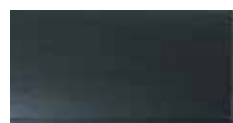
Pewter w/ Black Edge
1020730 - Cat. B
2" in



Espresso w/ Silver Edge
1064730 - Cat. B
2" in



Brushed Pewter
102074 - Cat. B
2" in



Espresso
1006474 - Cat. B
2" in



Black w/ Champagne Accent
1011957 - Cat. B
2" in



Rustic Brown
105074 - Cat. B
2" in



Pewter w/ Black Edge
1000134 - Cat. B
2" in



Stainless Steel w/ Lip
1010730 - Cat. B
2" in



Deep Mahogany
104174 - Cat. B
2" in



Gloss Black w/ Silver Edge
1009257 - Cat. C
2-1/4" in



Silver w/ Black Accent
101015 - Cat. C
2-1/2" in



Gloss Black w/ Silver Edge
101115 - Cat. C
2-1/2" in



Espresso w/ Silver Lip
1064700 - Cat. D
3" in



Brushed Sliver w/ Black Lip
1011700 - Cat. D
3" in



Pewter w/ Black Edge
1020700 - Cat. D
3" in



Brushed Sliver w/ Lip
1010700 - Cat. D
3" in



Brushed Black w/ Lip
1007700 - Cat. D
3" in



Espresso Grain w/ Pewter
Brushed Lip
1064870 - Cat. D
3-3/8" in

Product Showcase

Sculptures and Paintings



US Fish and Wildlife Service, Shepardstown WV
Artline was commissioned to create custom sculpture in memory of fallen soldiers for the agency

Product Showcase

Sculptures and Paintings



Custom Labyrinth Handpainted by Artline on the Hospital Floor
VA Medical Center Walla Walla WA
(center bottom image)

Collections

Abstract



Collections

Aqua



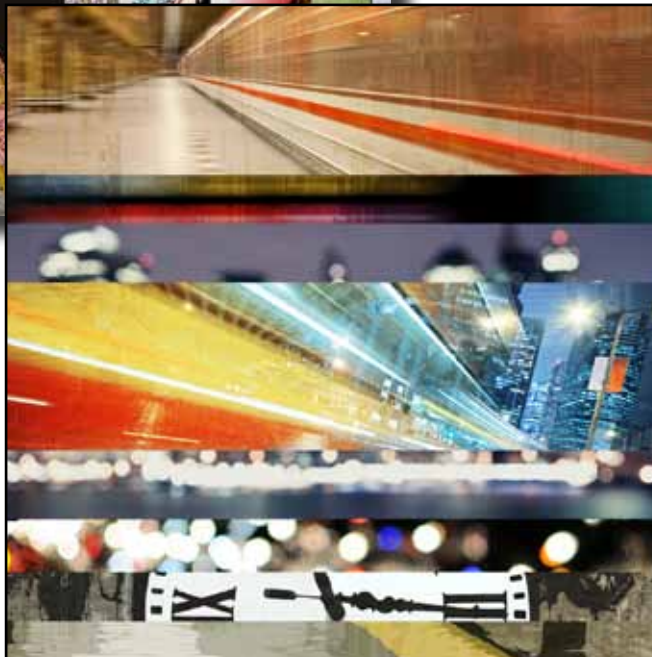
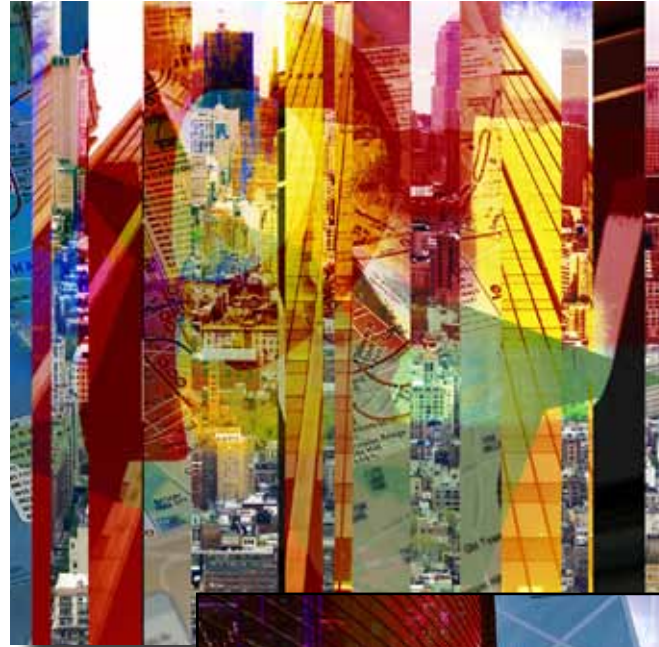
Collections

Aviation



Collections

City Lights



Collections

Music



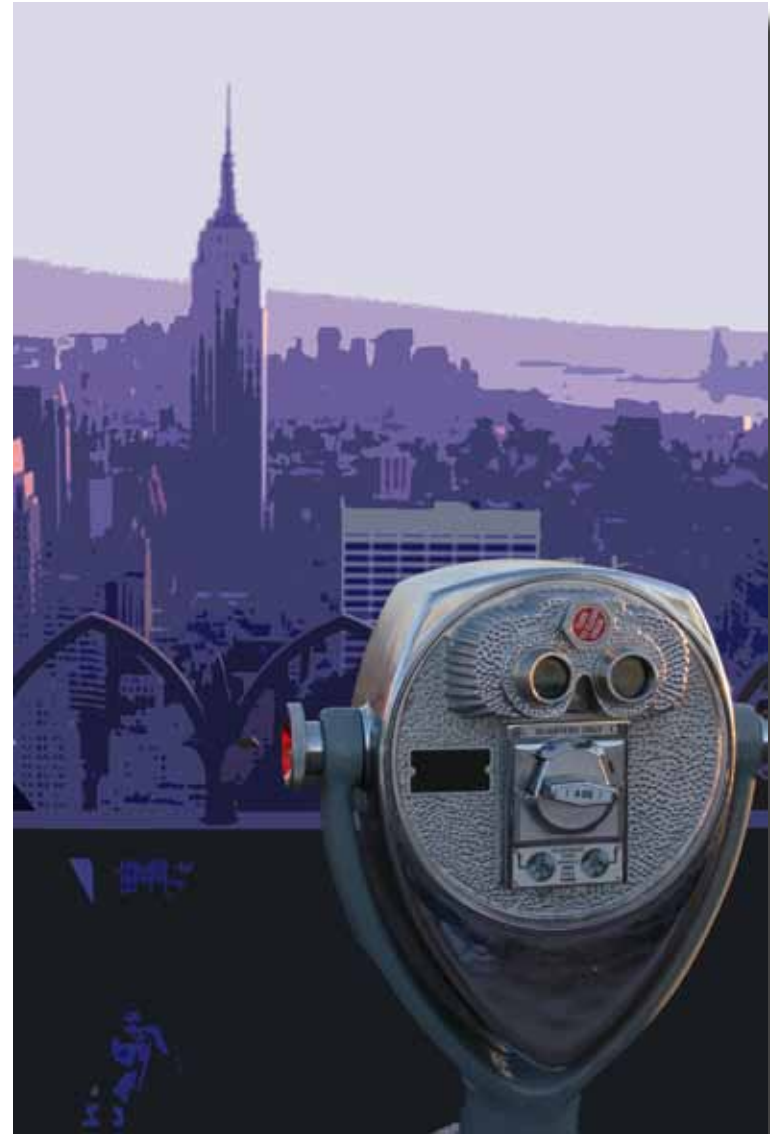
Collections

Zen



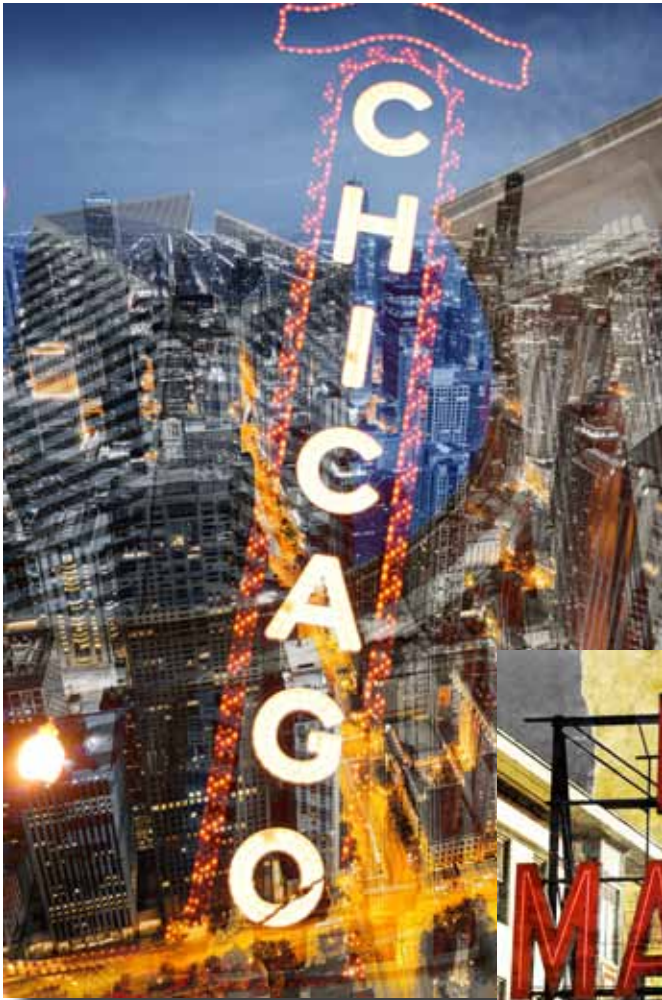
Collections

Regional Images

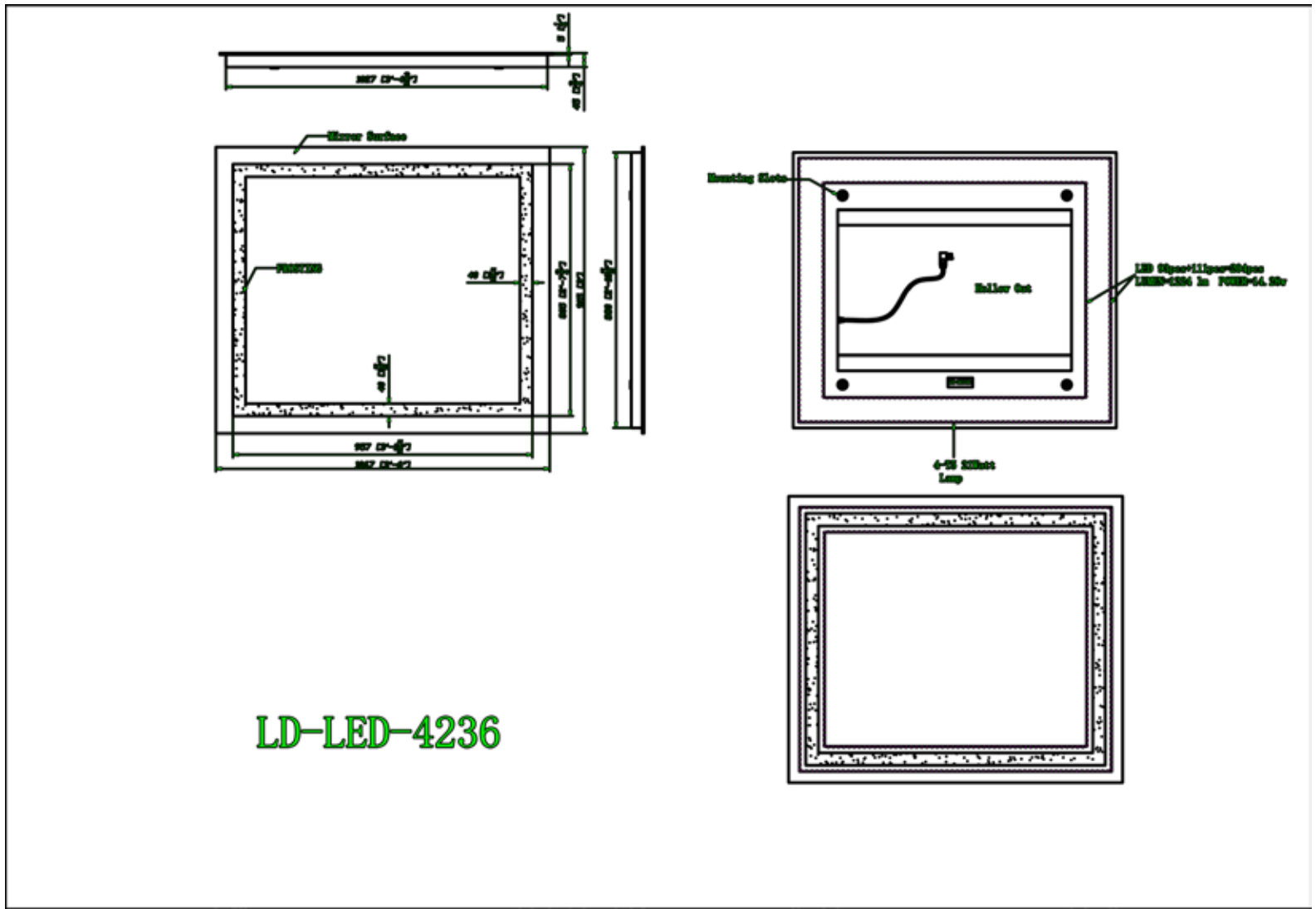


Collections

Regional Images

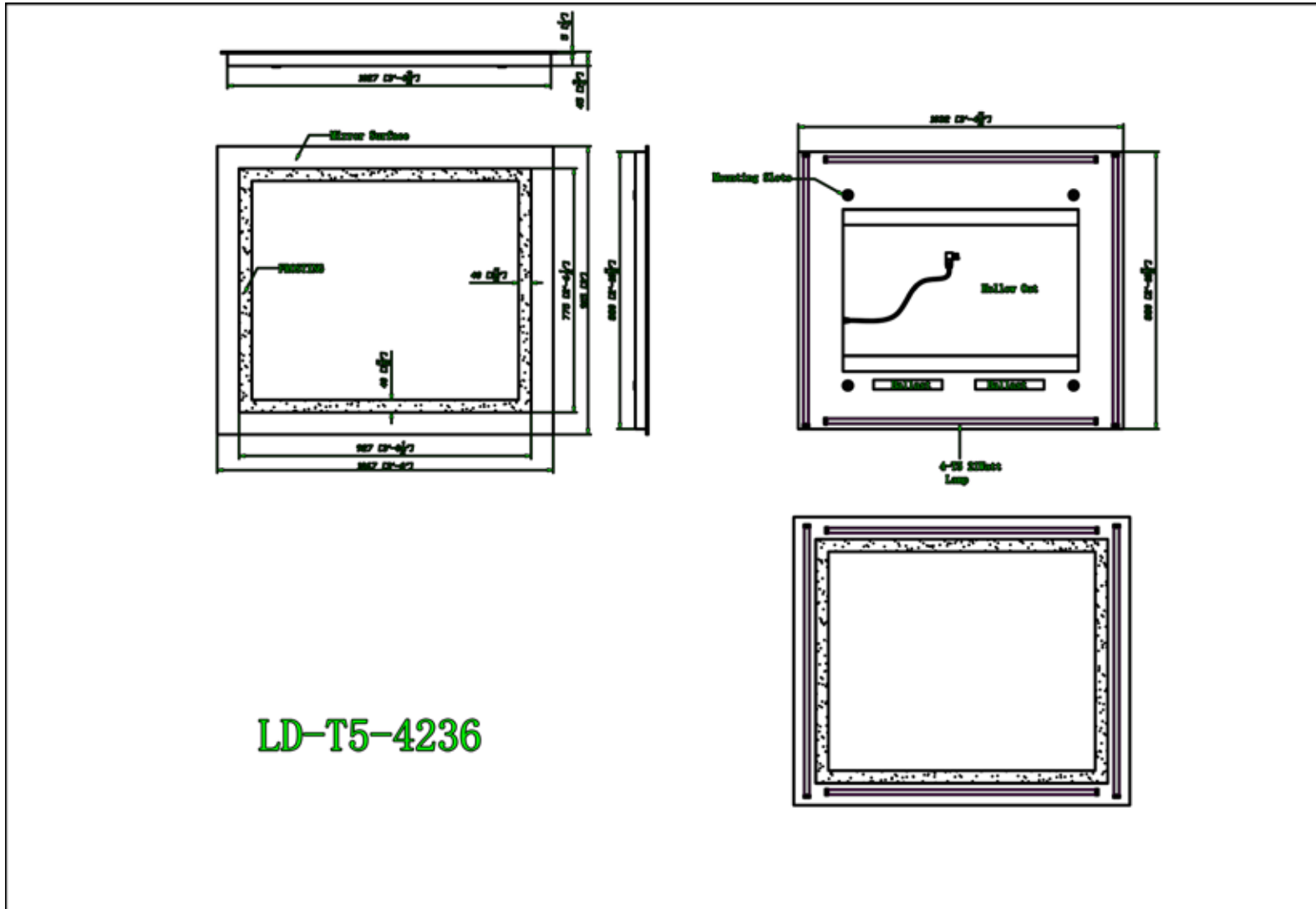


Lighted Mirror Spec Sheet for LED Mirrors





Lighted Mirror Spec Sheet for T5 Mirrors





Vinyl Spec Sheet

Physical Properties	<p>Product Weight: 20oz. per lineal yd., (13oz. per sq.. yd.) Vinyl Weight: 17oz. per lineal yd. Fabric Weight: 3oz. per lineal yd. Thickness: 0.015 to 0.030 in. *depending on texture Fabric: Poly-Cotton Osnaburg or Polyester Nonwoven *depending on texture</p>
Breaking Force	<p>Breaking Strengths, lbs. force Machine Direction-warp: *Exceeds Type II minimum of 50lbs. Cross Machine Direction-fill: *Exceeds Type II minimum of 55lbs.</p>
Tearing Strength	<p>Machine Direction-warp: *Exceeds Type II minimum of 25lbs. Cross Machine Direction-fill: *Exceeds Type II minimum of 25lbs</p>
Cold Cracking Resistance @ 20 degrees F	No Change
Heat Aging (7 days at 158 degrees F)	<p>*Does not become stiff, brittle, discolored, or show loss of grain Specifications/Testing/Certification Federal Specification: *CCC-408-D,C,B,A *Type II *Class A CFFA Specification: *CFFA-W-101-D *Type II *Class A</p>
Fire Testing	<p>ASTM -E84 Tunnel Test Class A NFPA286 Corner Burn Test Class A NFPA265 Corner Burn Test Class A BS476 Part 6&7 *Meets or exceeds requirements for flame spread, smoke developments and flashover.</p>
Mold/Mildew Bacterial Resistance	<p>ASTM-G21 Specifications: Passed all requirements of CCCW-408-D</p>
Environment	<p>NYC MEA: Register *Cadmium and Lead Free Formulation</p>



Artline Group

1 Midland Avenue
Hicksville, NY 11801

Please visit us at:
www.artlinegroup.com